



FLASLA

2012 ANNUAL CONFERENCE AND EXPO

Re: Landscape Architecture
re:invest
re:think
re:flect

June 28-30, 2012

Renaissance World Golf Village
St. Augustine, Florida

WELCOME

Welcome to Florida's "First Coast" and the nation's oldest city, St. Augustine! The Jacksonville and Daytona sections are excited to host the 46th Annual Florida Chapter ASLA Conference and EXPO at the beautiful Renaissance World Golf Village Resort in historic St. Augustine.

There is no place in the United States quite like St. Augustine, and this is a great opportunity to take in the historic beauty as the city prepares for its 450th anniversary celebration! This year, we invite you to bring the entire family and explore the city's rich history and the surrounding area's tranquil, natural beauty.

St. Augustine has something for everyone in your family! From strolling the delightful historic district, with its cobblestone streets, quaint cafes, bars, unique shops and bed-and-breakfast inns to the beauty of an early morning sunrise over the pristine beaches. The city comes alive every day with locals and tourists setting out on foot to explore significant landmarks including the Castillo de San Marcos, Lightner Museum, Flagler College, St. George Street and so much more.

The conference is conveniently located on the remarkable Renaissance World Golf Village Resort, home of the World Golf Hall of Fame. The resort offers two world-class golf courses (don't forget to register for the golf tournament on Thursday!), a 24-hour health club and sauna, the IMAX theater, a swimming pool and hot tub, walking & jogging trails, and the village shops & restaurants. You will also have access to the Serenata Beach Club, an exclusive oceanfront oasis located just minutes from the resort. The resort is accessible via the resort's complimentary shuttle service.

The Conference Committee is pleased to offer a wide range of sessions that will both inspire and educate. Focusing on the 2012 conference theme, Re: Landscape Architecture - re:invest | re:think | re:flect, the education sessions promise to provide the spark that can push us to do great things in 2012 and beyond.

Landscape architects face unique challenges in this new economic reality. At the same time, there are countless new opportunities for our profession. The conference theme focuses on the many "re:" words and ideas that can help landscape architects "re:think" the current issues and challenges that confront our practices and our profession; opportunities to expand our mindset about "re:levant" and "re:newable" design ideas for a sustainable future; "re:flecting" on Florida's historic landscape and our legacy in preserving these treasures; "re:investing" in our profession and our communities; and inspirational and motivating discussions that will help us "re:new" and "re:vive" our attitudes and our businesses, with a focus on economic opportunities and strategic planning that position our profession and our businesses for success.

All courses and tours are pending approval for credit with the Florida Board of Landscape Architecture and the national accrediting system: LA CES (Landscape Architecture Continuing Education System). Florida requires two hours in an approved LAW course and two hours in an approved Florida Building Code course. This conference offers two LAW opportunities and one Florida Building Code approved course to satisfy your requirements.

The 2012 Florida Chapter ASLA Conference and EXPO will be an event you won't want to miss. This is a great family vacation opportunity! Stay ahead of the curve, and get your CEU credits out of the way early! Please join us for three days of excitement, inspiration, thought provoking education sessions, fellowship and celebration!

Andrew S. Dance PLA, ASLA
2012 Conference Chair



RENAISSANCE WORLD GOLF VILLAGE RESORT

The Florida Chapter ASLA Executive Committee and the Conference Committee is pleased to announce that the 2012 FLASLA Annual Conference and Expo will be held at Renaissance World Golf Village Resort near historic St. Augustine, Florida June 28, 2012 through June 30, 2012. A special low rate of \$119.00 for conference attendees has been negotiated. Follow the link below to book your room today. Hurry, the room block will sell out quickly!

With its recent \$10 Million renovation, an elegant Colonial Asian feel has been achieved throughout the new Renaissance Resort at World Golf Village, in St. Augustine, Florida. From our inspiring new atrium lobby and restaurant, to your pristine new guest room or suite, there is a lot to see at the Renaissance Resort at World Golf Village!

Freshly renovated accommodations feature 37 inch flat-panel televisions, sparkling new bathrooms and furnishings, high-speed wireless Internet access, spacious work areas, wet bars and refrigerators among many modern luxuries.

Whether you return for the golf or our dining, the beaches or the sights of St. Augustine, you'll always stay centered with us, in the heart of the World Golf Village. Enjoy a Florida family vacation, a romantic escape, your wedding or a meeting, surround yourselves with Florida's finest pursuits, and experience our stunning transformation at the center of it all!

FLASLA Annual Meeting
Renaissance Resort at the World Golf Village
500 South Legacy Trail
St. Augustine, FL 32092
US

Phone: 1-506-474-2009 / 1-888-789-3090
<http://www.worldgolfrenaissance.com>

Consider staying through Sunday to experience the World Golf Village's Independence Day Celebration which includes a huge fireworks display over the golf course, BBQ, live entertainment and fun.



CONFERENCE TOURS

The 2012 Conference Committee is proud to offer two exciting tour opportunities. You get to take your pick between a stroll through the Flagler College campus and the historic St. Augustine downtown or you can take a trip to western St. Johns County to travel down a new trail system, one that offers a lot of unique stops along the way. There are plenty of great landscape architectural sites to see in St. Augustine and St. Johns County! Both tours have been submitted for continuing education credit.

Trail Tour: Thursday 7:45 AM-12:00PM

Steven Davis, ASLA, RLA & Herb Hiller, East Coast Greenway Alliance with appearances by Brad Purcell, Putnam County Commissioner; Wil Smith, St. Johns County Parks Director; Cindy Stevenson, St. Johns County Commissioner and Tommy Lee, The Old Florida Antique Museum

3.0 CECs
\$35.00 Members
\$55.00 Non-Member

"The SR 207 Trail: A Tour of the Trail Building Process"

Successful construction of trail systems requires an understanding of the complex process of trail building. Landscape architects provide an effective mix of planning, design, problem solving and consensus building skills required to meet this challenge. The SR 207 trail tour will show every step of the process, first hand, from Palatka to St. Augustine. A portion of this tour will be conducted on the SR 207 trail.

Flagler College & Downtown St. Augustine Walking Tour: Thursday 9AM-12:00PM

Fred Halback, RLA, FASLA, CLARB

3.0 CECs
\$35.00 Members
\$55.00 Non-Member

"re:connecting – Interpreting History in a Living City"

Understanding heritage tourism allows the City of St. Augustine to create an 'organized visitor experience' for the over 4 million tourists per year that visit the community. The tour will utilize a series of heritage tourism projects as the ribbon that guides visitors to the areas resources. The tour will demonstrate planning and design techniques that are historically, culturally, and economically sustainable.



Photo Credit: Marquis Halback, Inc.

FLASLA 2012 GOLF TOURNAMENT

This year FLASLA will be hosting a Golf Tournament in conjunction with the 2012 Conference and Expo. This year's tournament will be held at the beautiful Slammer and Squire Golf Course!

The Slammer & Squire is located in the heart of the golf resort and is one of St. Augustine's favorite golf courses. This 18-hole championship resort course was designed by Bobby Weed with design consultants Sam "The Slammer" Snead and Gene "The Squire" Sarazen.

About Slammer and Squire

The Slammer & Squire course officially opened to the public in May 1998 and has become a favorite Jacksonville Florida golf course and features two distinct nines with generous fairways, contoured greens, and plenty of water hazards along with impressive views of the World Golf Hall of Fame. The course was the host site of the Liberty Mutual Legends of Golf, a Senior PGA TOUR EVENT and currently hosts an array of other golf events such as the Handa Cup.

Golf Tournament Rates

| Type | Member | Non-Member |
|-------------------|----------|------------|
| Individual Player | \$100.00 | \$150.00 |
| Twosome | \$200.00 | \$250.00 |
| Foresome | \$400.00 | \$450.00 |

Members and non-members can register for golf with their conference registration online.

Twosome and Foresomes are welcome.

This tournament is welcome to non-conference attendees as well.



THURSDAY, JUNE 28TH

EDUCATIONAL SESSIONS

Landscape Irrigation Problems that Waste Money and Water

David Wickham, ASLA, FIS, MS

Thursday 8-10 AM 2 CECs

Each attendee will learn about the 100+ year old history of irrigation within the U.S. Additionally, attendees will learn how to correct many of the current irrigation problems and oversights that can easily waste up to 50% of all irrigation water.

Preserving Mount Lebanon Shaker Village Historic Landscape

David Driapsa, ASLA

Thursday AM 10:30 AM-12 PM 1.5 CECs

Mount Lebanon is one of the 100 most significant endangered historic sites in the world. Settled in 1787, it was comprised of 600 people, 100 buildings, and 6,000 acres divided into five groups, each with its own dwellings, barns, fields, millstream and workshops. This historic landscape preserves a comprehensive example of Shaker domestic, agricultural and industrial ideals epitomizing their distinct aesthetic principles, material culture, and a sustainable lifestyle. Mr. Driapsa and two interns documented Mount Lebanon Shaker Village National Historic Landmark. They pushed the envelope of historic preservation putting a 3-D model on Google Earth.

Trails - Locally Resourceful Tourism

Steven Davis, ASLA, RLA & Herb Hiller, East Coast Greenway Alliance with appearances by Brad Purcell, Putnam County Commissioner; Wil Smith, St. Johns County Parks Director; Cindy Stevenson, St. Johns County Commissioner; Tommy Lee, The Old Florida Antique Museum

Thursday 1-3 PM 2.0 CECs

Attendees will be provided an overview of trail case studies, local tourism resources and the vitality achieved when trails bring communities together. The Savannah Northeast Florida Workshop on Wheels (SNF-WOW), The SNF-WOW Deuce, The St. John River Tour (via Train, Bike, Kayak & Pontoon Boat) and The Jacksonville Baldwin Trail will all be explored. In addition to the St. Johns River-to-Sea Loop, many more trail tourism opportunities are available or under

development in Florida? These state-wide adventures can be enjoyed for an afternoon outing or a full week of recreation and relaxation. Even better, these experiences are creating sustainable development and bringing life to lesser-known Florida locations.

LED Lighting: Using Design, Understanding Technology, Embracing Ecology

Brandon Renouf, IES & Rick Utting

Thursday 1-2 PM 1 CEC

IES Advanced technology has made LED-lighting a viable solution for outdoor environments. The unwanted side-effects of traditional lighting: wasted energy, maintenance costs, and the negative visual and environmental impacts of over-illumination, are driving the adoption of LED lighting for many projects. This session covers cutting edge information about human interaction with color, contrast, and glare that enhance the visual experience while protecting the environment. Brandon Renouf, IES, Lighting Engineer at Landscape Forms, will present concepts that leave participants armed to evaluate LED-lighting for future projects. Solid State/LED technology is an important facet to sustainable site design.

Building Sustainable Splashpads

Stephen Hamelin

Thursday 2-3 PM 1 CEC

The popularity of Splashpads installed in community parks continues to increase. As the number of installations grows, more and more design professionals and recreation leaders are asking some key questions regarding sustainability.

This session will explore and explain the many water conservation strategies available to Splashpad installations, starting from traditional recirculation systems to the innovative capture & repurpose solutions. We will also examine other aspects, such as choice of materials, product selection and efficient transport, that impact the overall sustainability of a Splashpad.

This session will also touch on design considerations that can help projects fall under the LEED rating system.

FLASLA

The East Coast Greenway & the Economics of Trails

**Steven Davis, RLA, ASLA; Karl Soderholm, RLA,
AICP, LEED AP BD+C; Herb Hiller, East Coast
Greenway Alliance**

Thursday 3:30 - 5:30 PM 2 CECs

Trails have long been considered among the great amenities a community can offer, but did you know that trails are an engine for economic development? This course focuses on the East Coast Greenway trail that links cities from Maine to Key West with a multi-use trail, and the impact on economic development that has been generated by this effort.

re:modeling - Site Planning and Design with BIM Workflows

Eric Gilbey, RLA, ASLA

Thursday 3:30 - 4:30 PM 1 CEC

Building design professionals are increasingly adopting Building Information Modeling (BIM) in their projects and asking Landscape Architects to use the same applications. This session will introduce the basic principles of BIM and describe how current technology enables Landscape Architects use open BIM workflows to collaborate with clients. The benefits and challenges of integrating BIM modeling software will be explained, and opportunities for BIM technology development as it relates to Landscape Architecture.

Re: connecting – Creating and Organizing the Visitors Experience

**Fred Halback, FASLA, Tom Rahner (as Henry
Flagler) & Dana Ste. Claire**

Thursday 4:30 - 5:30 PM 1 CEC

Understanding the 'anthropology' of heritage tourism allows the City of St. Augustine to create an 'organized visitor experience' for the over 4 million tourists per year that visit the community. The course will utilize a series of heritage tourism projects as the ribbon that guides visitors to the areas resources. The course will demonstrate planning and design techniques that are historically, culturally, and economically sustainable.

Setting the stage will be an introduction of the uniqueness of heritage tourism in Florida and St. Augustine by Henry Flagler – 1830-1913 (played by Tom Rahner) tycoon, real estate promoter, and railroad developer.

FRIDAY, JUNE 29TH

EDUCATIONAL SESSIONS

How to Submit State Coastal Construction Permit Applications

Fritz Wettstein

Friday 10 AM-12 AM 2 CEC

This course details methods for successfully navigating state coastal construction regulatory processes. The Florida Beach and Shore Preservation Act charged the Florida Department of Environmental Protection to protect beaches and dunes from imprudent construction practices. One strategy employed in this protection is a requirement that licensed professionals, including landscape architects, must prepare site, grading and landscape plans to be submitted with permit applications. Participants will gain knowledge about the state's beach and dune protection policies and improve their ability to submit permit applications for beachfront projects.

Negligence & Landscape Architecture

Ted Karatinos, Esq. & Joe Samnik

Friday 10 AM-12 PM 2 CECs

Satisfies Laws and Rules Core Requirement. This presentation will focus on the tort of negligence and its specific relevance to landscape architecture.

Irrigation Requirement Analysis at the Early Stage of Project Design

David Farmer, ASLA & William Curtis, AISC

Friday 10 AM-12 PM 2 CECs

With the watering restrictions and constraints of today's world, it is important to get a full understanding of how much water will be required for a project, what the logical and efficient watering source should be, what watering windows are required and how long it will take to water a site, and how to maximize efficiency by fine tuning the mainline and source size and flows. This course will indicate how to do all of that at the very start of the design process and without laying out a single head or emitter.

Landscape Architecture & Public Welfare

Veronica L. Meadows, CAE

Friday 2-4 PM 2 CECs

Landscape Architects are licensed to ensure the protection of public health, safety and welfare. While the concepts of health and safety are well established, there has been a lack of definition for "public welfare". This presentation will discuss the groundbreaking study commissioned by the Council of Landscape Architectural Registration Boards (CLARB) which sought to define public welfare, and, using specific projects as examples, illustrate the impacts and benefits of landscape architecture on public welfare.

Social Media Strategies for Landscape Architects

Jason Castillo, ASLA; Brian Phelps, ASLA & Boyd Coleman, ASLA

Friday 2-4 PM 2 CECs

Social media has become quite popular in recent years but managing your firm's social media brand might seem overwhelming. This session will focus on using tools like Twitter, Facebook, and LinkedIn to create and manage your social media brand, and the use of a website and blog as an integral part of your social media strategy. Participants will leave this session equipped to use these social media concepts in the day-to-day operation of their business.

Behind The Green Door: Pusillanimous Prevarications & Perk

Jim Barnes

Friday 2-3 PM 1 CECs

After all of this talk in the past decade about the need for green initiatives and efforts, the question is no longer WHY we need to go green, the question is HOW. American cities are confronting serious issues and we are in dire need of tangible, deployable & affordable solutions. Everyone is talking about developing green or sustainable programs in their cities and neighborhoods. Yet doing it right requires a systems approach and a strategy not just doing random projects. This session will review a how-to guide in developing an overall strategic approach to sustainable efforts. This includes the development of a vision and sustainability goals. In addition attendees will discuss a

FLASLA

baseline analysis of current sustainability impacts such as energy use, water use, and waste generation using the Gulf Coast Oil Spill as a backdrop for the discussion.

Green Facade Wall Opportunities in Florida: Technical Aspects, Costs, Plants and Maintenance **Dean Hill, ASLA**

Friday 3- 4PM 1 CEC

Green walls have been around since the Hanging Gardens of Babylon, but they have only recently been used to increase the energy efficiency of building envelopes, provide shading of hard surfaces, sequester carbon, connect habitat, increase vegetative cover and help manage stormwater. Participants will learn the technical aspects of both green facade and living green wall systems to successfully incorporate green facade wall technology into their Florida design scope. The session will immerse attendees in the relevant issues necessary to manage client expectations, write bulletproof specifications and effectively budget for green facade wall systems.

Public / Private Partnerships: Lessons from Restoration in the Nation's Oldest City **Jeremy Marquis, RLA, LEED AP BD+C; Martha Graham, P.E.; Dan Holiday; Len Weeks, Former Mayor of St. Augustine**

Friday 4:30-5:30 PM 1 CEC

As Florida's municipalities struggle with reduced funding, the opportunities presented through public / private partnerships can help to advance community goals in lean economic times. On the eve of St. Augustine's 450th anniversary in 2015, public / private partnerships are critical to repairing and preparing the City.

The first such project in St. Augustine was the rehabilitation of Aviles Street, the Oldest Street in the Nation (ca. 1573). Grassroots and City efforts combined to restore walkability and economic opportunities in downtown's most historic section. The course will focus on the lessons learned from St. Augustine that can help statewide.

Designing Performance Based Playground Surfacing Specifications **Chad Morningstar**

Friday 4:30-5:30 PM 1 CEC

ASTM F1292 is the governing standard for regulating the safety performance of playground surfacing. It's an extremely important and relevant document for anyone considering the purchase of playground safety surfacing. The document however is highly technical and even a careful read can prove to be too technical to provide meaningful information to the average reader. The following course has been designed to provide insight into the key concepts of the document using everyday language that you can understand. The course further explains how the information contained within the standard can be used to create a performance based safety surfacing specification.

re:flect - Behind the Scenes of the 911 Memorial **Joe Petry**

Friday 4:30-5:30 PM 1 CEC

The design work of Jacksonville based Delta Fountains, Inc. was a major part of the National 911 Memorial Fountains. Where the world's largest buildings once stood is the nation's largest fountains, set into the ground as waterfalls. This course provides a behind the scenes look at the transformation from the wasteland once known as "ground zero" into a memorial that will last for generations and be viewed by millions. And in a stunning way, the hundreds of streams that cascade into the center of the massive twin fountains evoke the vanished twin towers in a way no one, not even the designers, could have imagined.

SATURDAY, JUNE 30TH

EDUCATIONAL SESSIONS

Advanced Wind Requirements in Florida - (Course #0008822)

Joe Samnik

Saturday 10:30 AM-12 PM 2 CECs

(Satisfies Advance Building Code Core Requirement)
This course will provide design professionals with the fundamentals of the effects of wind on buildings, structures, and trees.

Sustainability Best Practices for Florida LAs: A Panel Discussion of Green Techniques

Ruth Hamberg, ASLA AICP RLA; Mark Johnson, ASLA RLA; Eddie Browder, ASLA, RLA, CLARB & Christina Hite Lathrop, ASLA RLA

Saturday 10:30 AM-12 PM 2 CECs

Sustainability and landscape architecture: A panel discussion of current trends and "tried and true" methods, techniques, metrics of sustainable site/ city planning and design techniques and theory, primarily for a "smart growth" future of infill and redevelopment in cities. Members of CoSE will provide 'how to' nuts and bolts details and project examples. The focus will be on simple, practical solutions that apply at multiple scales. The panelists may showcase techniques from the Vision Book, Award Winning Projects, LEED ND & SITES providing metrics as well as applications that maybe used now by every LA in Florida.

An Inside Look at the New L.A.R.E

Veronica L. Meadows, CAE

Saturday 10:30 AM-12 PM 2 CECs

Learn first-hand from the Council of Landscape Architectural Registration Boards (CLARB) about changes to the structure and delivery of the Landscape Architect Registration Examination (L.A.R.E.) and how they will produce a more relevant, defensible, and efficient exam experience for candidates. From the streamlined registration process to the fully computerized administration, attendees will learn how the new exam was developed, what content will be tested, how the exam will be administered and get a sneak peek at the new item (problem) types featured on the exam. Attendees will leave with accurate information about the new exams and realistic expectations of the new exam format and, as a result, candidates will be in a better position to be successful.

What's Your Shape? Learning Your Communication Style

Jean Rademacher, CWDP, JSS, JCTC, JCDC

Saturday 2-3 PM 1 CEC

This interactive workshop has participants completing a brief assessment to discover their style. They will learn about the pros and perceived cons of each communications style and how to modify their own style to help achieve outcomes they are looking for. It goes into strengths of each style and how to recognize other styles within their coworkers, staff, customers, friends and family.

When a person can recognize a communication style, they can communicate and share information in a more efficient way. Participants will have fun, learn something about themselves and have a better understanding of the people they work with.

re:invest - Advancing the Profession through Advocacy

Diane Ferguson, Attorney; Michael Pape, RLA; Florida Rep. Charles Van Zant; St. Johns Commissioner Cyndi Stevenson & Ryan Anderson, Government Consultant

Saturday 3-4 PM 1 CEC

This course will contain a panel presentation consisting of one landscape architect, one state representative, one county commissioner, and one governmental consultant. Each of the panel speakers will describe what they have found to be effective association advocacy techniques at the state and local level from their unique perspectives.

FLASLA

Rethinking Water Conservation: Leadership Opportunities Abound

**Kevin B Cavaoli, RLA, FASLA & Todd Mohler, RLA
and Irrigation Association CID-G, CID-C, CID-R,
CLIA, CGIA, CIC**

Saturday 2-4 PM 2 CECs

Florida Registered Landscape Architects are presented with numerous challenges from various sources to reduce overall project water consumption. Some of these are legally required and many are suggestions from their clients, their project team members are market driven. There are significant reasons to reduce water consumption but too often beneficial uses of water are disregarded to the detriment of the environment or the project use. This class explores water conservation drivers landscape architects regularly encounter and how understanding the premise of each driver allows landscape architects to develop their own strategy to provide clear leadership in this growing practice area.

Student Research of Florida's Three Landscape Architecture Programs Glenn Acomb, FASLA; Shawn Kalbli, ASLA & Gianno Feoli

Saturday 2-4 PM 2 CECs

Students or current graduates from UF, FIU and FAMU will present a summary of their research or capstone project with an additional question and answer period. A total of 4 students will present. Interaction between the presenting students and the professionals will be encouraged.



TEST YOUR SWING!

.....

COMPARE YOUR PUTT!

.....

CAN YOU CONTROL THE BALL?

.....

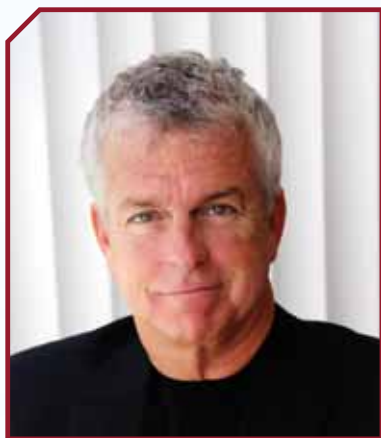
EVEN IF IT IS NOT A BALL?



While at the Welcome Reception enjoy fun and games while raising money for the Friends of Landscape Architecture Committee on Continuing Existence (FLACCE). Bring your dollars to putt with historic clubs on recreated greens

or play courses around the world on simulators. Can you pull off the short, yet testing, 132-yard shot over water and find the green on the Challenge Hole? It is an island green reminiscent of the famed 17th hole at the Tournament Players Club at Sawgrass. Let's have fun raising money to promote and advance the profession of Landscape Architecture in Florida!

KEYNOTE SPEAKERS



Mike Staver

Deal With It / Leadership Isn't for Cowards

Friday, June 29, 2012 8 - 9 am

Today, more than ever, you are being asked to do more and more. What it gets down to is how you choose to invest energy. It's not the hours you work, it's the value you get from the work you do. Do not, under any circumstances, let someone convince you that it is an easy process - but it is simple. In this session, Mike Staver, CEO of The Staver Group and confidential advisor to Fortune 500 CEOs and executives, will instruct attendees on what it takes to stay calm and focused even if they don't like the circumstances. Based on his just released, new book "Leadership Isn't for Cowards", Mike will demonstrate how your ability to influence your followers is key for creating significant results.



Stan Skalka

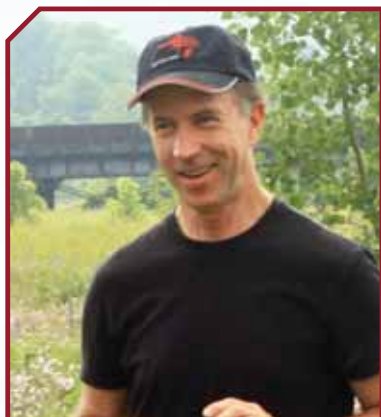
Endurance

Friday, June 30, 2012 9 - 10 am

Sponsored by: Victor Stanley Inc (Site Horizons)



Stan Skalka, President of Victor Stanley, Inc. presents a lecture on the lessons all landscape architects can take from one of the greatest tales of survival in expedition history: Sir Ernest Shackleton's 1914 voyage to the Antarctic. The book "Endurance" is the setting that Stan uses to relate Shackleton's "passion" for polar exploration and his drive to be written into history books, comparing it to the "passion" inside each landscape architect that is needed to be successful in their endeavors. As with Shackleton, passion is a necessary ingredient for LA's, not only for creativity, but as a reserve to harness when economic times are discouraging.



Rick Darke

The Layered Landscape:
Design Ethics for The Modern Ecology

Friday, June 30, 2012 4 :30- 5:30 pm

Design trends and fashions come and go, mostly focused on aesthetics and style, but recently there has been a sea change in how we approach green spaces. This trend embraces the dynamic nature of living landscapes, finding opportunity in the flux and vibrancy of today's ecology. Using examples from Berlin to New York to Santiago, Rick Darke, President of Rick Darke LLC, will illustrate a diversity of habitats and designed landscapes and will discuss how his approach to design and management has evolved in an age when the only certainty is the accelerating pace of change. Of special note, Darke's writing and photography is featured in Annik La Farge's new book "On The High Line: Exploring America's Most Original Urban Park".

SPECIAL EVENTS

This year's conference is packed with fun-filled special events for our members and guests. In addition to the optional tours, keynote speakers and education sessions, the conference committee has planned several special events for you to enjoy the St. Augustine hospitality and network with your fellow Landscape Architects.

Welcome Reception:

Sponsored by: Tremron



Come enjoy the sunset view and welcome your friends and colleagues at the World Golf Hall of Fame as we kick off the 2012 Conference. Enjoy drinks and hors d'oeuvres and exclusive access to the World Golf Hall of Fame exhibits after hours as they limit attendance for our exclusive event. In addition, there will be several challenge events provided throughout the museum to raise funds for the Friends of Landscape Architecture as we head into another election year. See if you can beat your friends at unique golf challenges (have you ever tried to putt a marshmallow?), Win great prizes and help us support this important cause!

Additional tickets are available for \$35.

FLASLA 2012 Conference Welcome Reception
World Golf Hall of Fame
One World Golf Place | St. Augustine, FL 32092
<http://www.worldgolfhalloffame.org>

Evening Pub Crawl:

Join your fellow LAs and vendors as we visit the historic pubs of downtown St. Augustine. So everyone is safe, transportation will be provided to and from the hotel throughout the evening. This annual tradition helps members and guests get to know each other, rekindle old friendships and start the week off with a bang!

Vendor Reception:

Enjoy complimentary hors d'oeuvres and drinks in the Expo Hall as we celebrate this year's Vendors and Sponsors. Be sure to review all of the 2012 exhibits and cast your vote for the best in each category!

Annual Awards Gala:

Celebrate with your colleagues as the Florida Chapter honors the award winning projects of 2012 from both the professional and student awards programs and the volunteers that give so much of their time to the Chapter. All winning projects will be highlighted during the event. Congratulations to all of the recipients of the FLASLA Design Awards and Chapter Service Awards!

Closing Reception:

Enjoy a cocktail by the pool and golf course as we close out the 2012 Conference. Celebrate with the 2012 Vendors & Sponsors as we distribute the exhibit awards from the Expo and bid farewell to your friends and colleagues who have joined us from around the country. Admission is free.



SCHEDULE AT A GLANCE

THURSDAY, JUNE 28TH

| | |
|-------------------|--|
| 7 am - 8 am | Breakfast |
| 7:45 am -12:00 pm | Tours |
| 9 am - 12 pm | Florida Board of Landscape Architecture - Board Meeting (2CECs - Laws & Rules) |
| 8 am - 12:00 pm | Educational Sessions |
| 12 pm - 1pm | Lunch |
| 1 pm - 5 pm | Guest/Spouse Activities |
| 12:30 pm - 5 pm | Golf Tournament |
| 1 pm - 5:30 pm | Educational Sessions |
| 6 pm - 8 pm | Welcome Reception at the World Golf Hall of Fame |
| 8 pm -11 pm | Pub Crawl in St. Augustine - Transportation to/from hotel during the evening |

FRIDAY, JUNE 29TH

| | |
|-------------------|---|
| 6:30 am - 8 am | Presidents & Fellows Breakfast |
| 7 am -7 pm | Expo Open |
| 7 am -8 pm | Breakfast in Expo |
| 8 am -5 pm | Guest/Spouse Activities |
| 8 am -9:30 am | Opening Keynote - Mike Staver "Deal With It / Leadership Isn't For Cowards" |
| 9:30 am -10 am | Break in Expo |
| 10 am -12 pm | Educational Sessions |
| 12 pm - 2 pm | Lunch in Expo/Book Signing |
| 2 pm - 4 pm | Educational Sessions |
| 4 pm - 4:30 pm | Break in Expo |
| 4:30 pm - 5:30 pm | Educational Sessions |
| 5:30 pm - 7 pm | Vendor Cocktail Reception |
| 7 pm - 8:30 pm | FLASLA Awards Gala |

SATURDAY, JUNE 30TH

| | |
|---------------------|---|
| 8 am - 5 pm | Guest Spouse Activities |
| 8 am - 9 am | Breakfast Business Meeting |
| 9 am - 10 am | Keynote Address - Stan Skalka "Endurance" |
| 10 am - 10:30 am | Break In Expo |
| 10 am - 2 pm | Expo Open To Public |
| 10:30 am - 12:30 pm | Educational Sessions |
| 12:30 pm- 2 pm | Lunch In Expo/ Book Signing |
| 2 pm - 4 pm | Educational Sessions |
| 4 pm - 5:30 pm | Closing Keynote - Rick Darke "Layered Landscapes" |
| 5:30 pm - 7:00 pm | Closing Reception |

2012 CONFERENCE SPONSORS



GAP ARCHITECTURAL PRODUCTS, INC.



Alumi Guard
Arazoza Brothers
ICON Shelter Systems, Inc.
L.M. Scofield
Netafimusa
CLARB
Palmco

Paveway Systems
Pebble-Flex South
PermaTrak
Precision Sports Fields
Site Horizons
Stabil Concrete Pavers
SubZero/Wolf
Sutton Brick & Stone, Inc

Tree Planters of S. Florida, Inc.
US Shade & Fabric Structures
Urbanscape
ValleyCrest Landscape Dev., Inc.
Victor Stanley Inc (Site Horizons)
Wausau Tile



Florida Chapter ASLA
722 Vassar Street
Orlando, Florida 32804
FLASLA.org

REGISTRATION RATES

FLASLA

2012 ANNUAL CONFERENCE AND EXPO

June 28-30, 2012

Renaissance World Golf Village
St. Augustine, Florida

| REGISTRATION TYPE | EARLY | REGULAR | LATE |
|-------------------|-------------|-----------------|----------------|
| | ENDS MAY 25 | MAY 26- JUNE 21 | BEGINS JUNE 22 |
| ASLA Member | \$250.00 | \$325.00 | \$400.00 |
| Non-Member | \$325.00 | \$400.00 | \$475.00 |
| Students | \$75.00 | \$100.00 | \$100.00 |
| Emeritus | \$100.00 | \$150.00 | \$150.00 |

REGISTER ONLINE AT
WWW.FLASLA.ORG/EVENT/2012CONFERENCE